

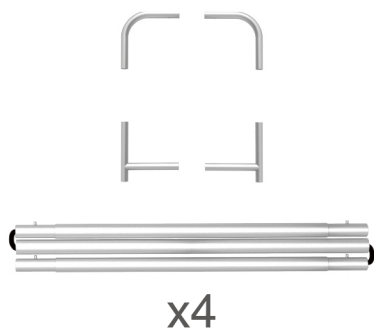
# INSTRUCTION



**10X10FT-BOOTH-U**

## STEPS

(1) Hardware

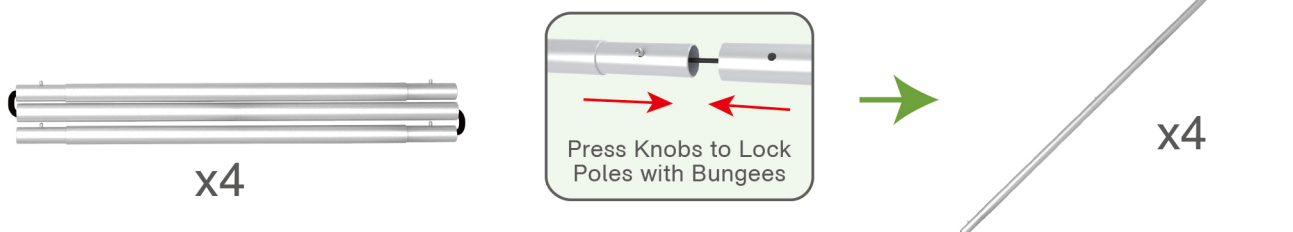


(2) Printed Graphic Fabric Banner (Optional)



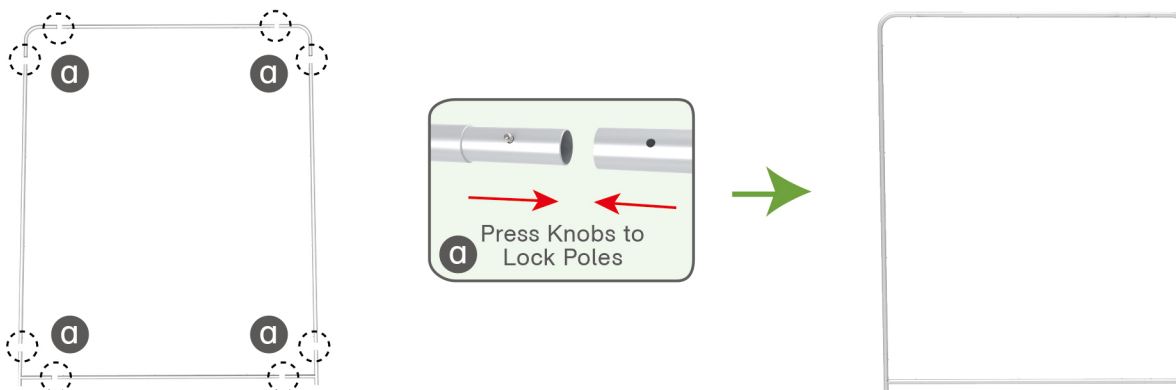
## STEP 01

Connect to make long poles according to labelings.



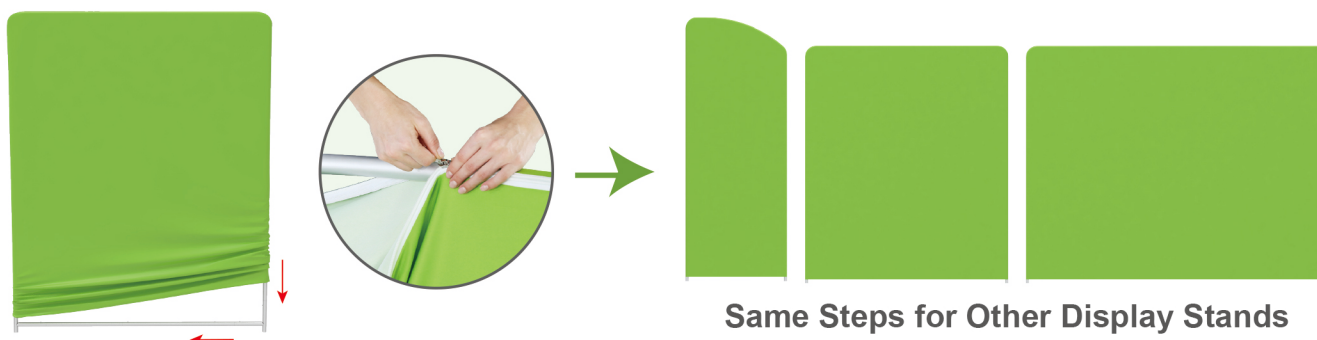
## STEP 02

Connect long poles with corner poles according to labelings.



## STEP 03

Slide fabric banner on frame from top and zip up at bottom.



## STEPS

## (1) Hardware

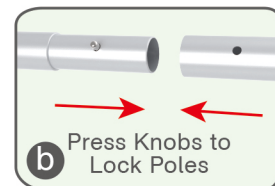
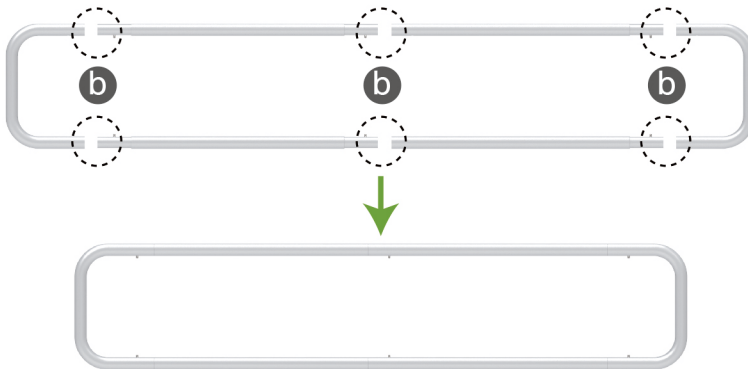


## (2) Printed Graphic Fabric Banner (Optional)



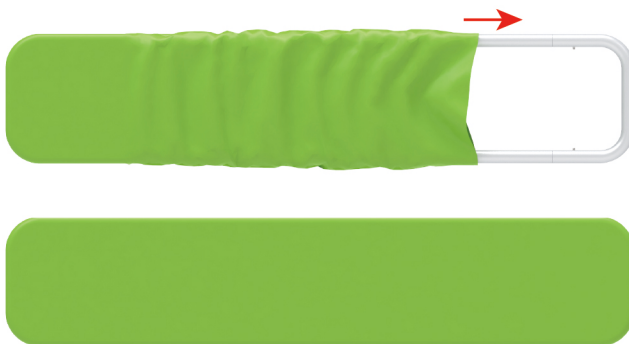
## STEP 01

Connect poles according to labelings.



## STEP 02

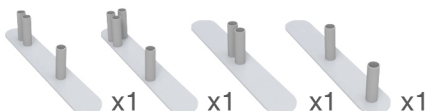
Slide fabric banner on frame from left and zip up at right.



## Booth Set Assembly



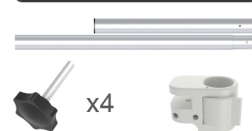
## (1) Base



## (2) 180° C-Shaped Clip &amp; 90° C-Shaped Clip



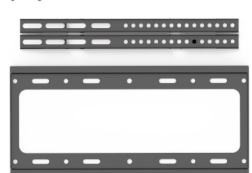
## (3) Shelving Board



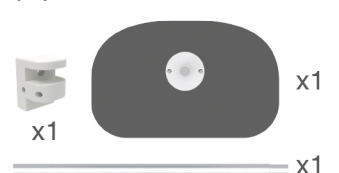
## (4) LED Light &amp; Clip



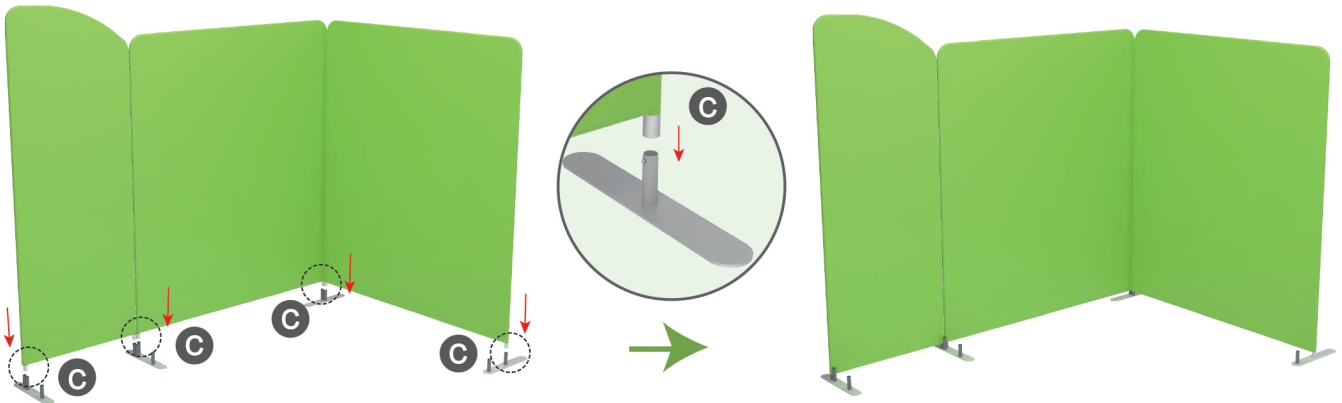
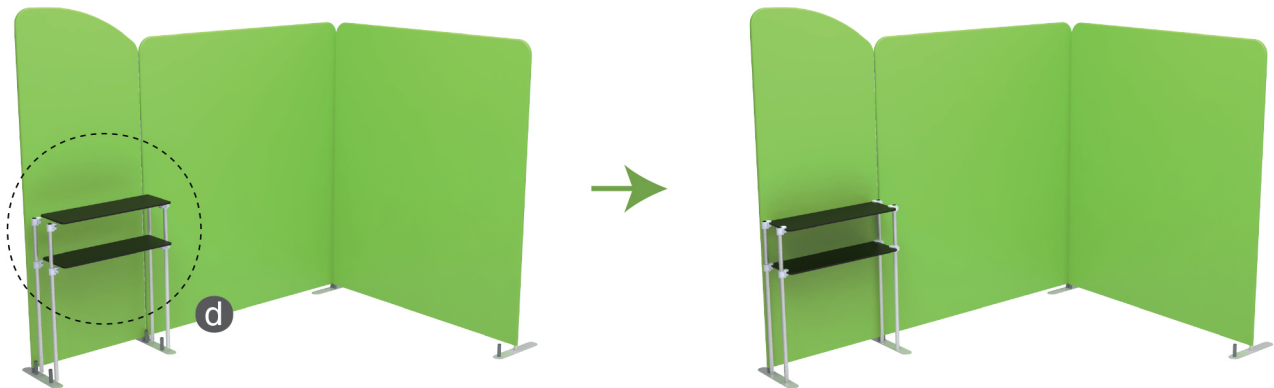
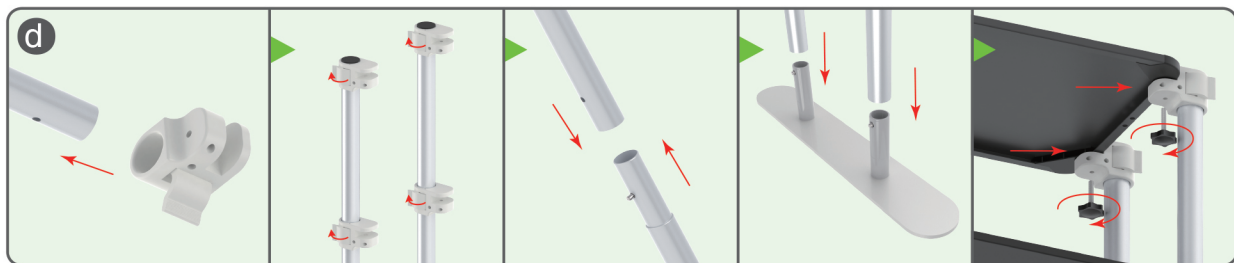
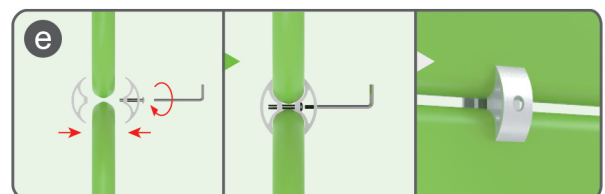
## (5) TV Mount



## (6) MDF Board Table



## STEPS

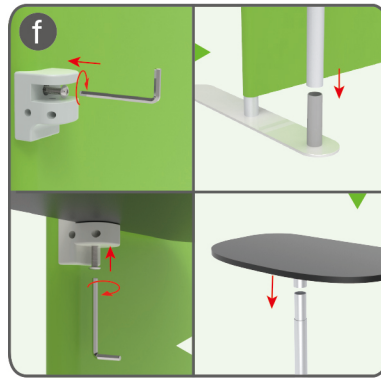
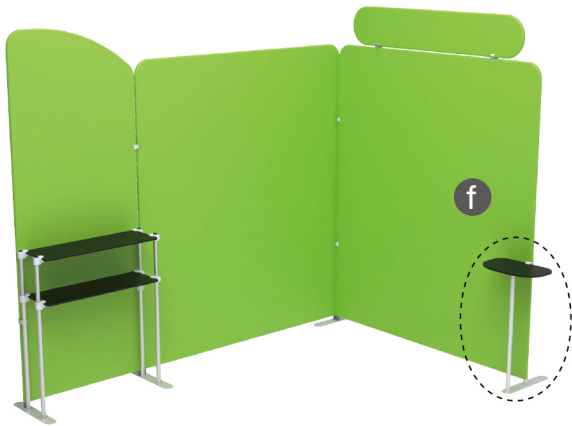
**STEP 01** Insert display stands onto feet by pressing their knobs.**STEP 02** Install shelving boards in position.**STEP 03** Interconnect display stands with C-shaped clips.



## STEPS

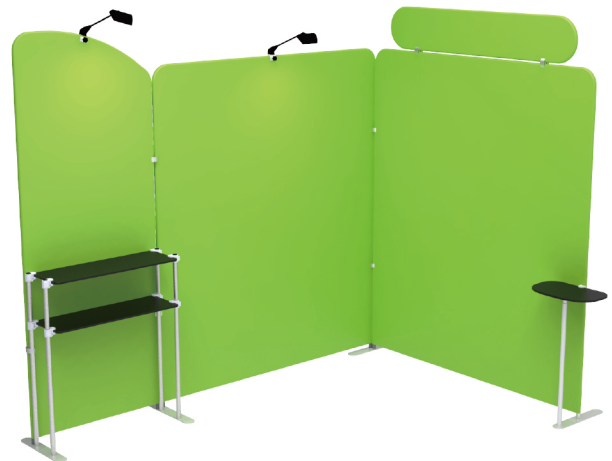
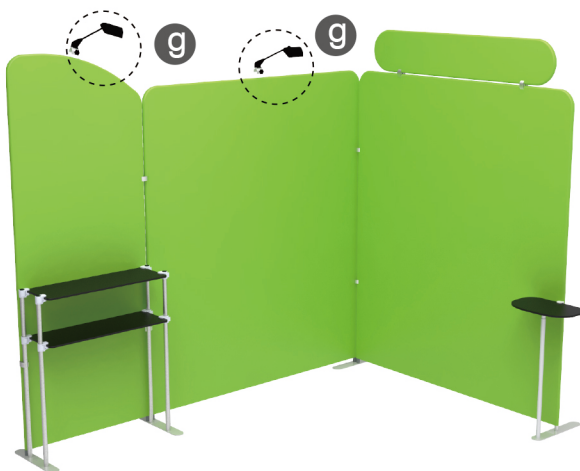
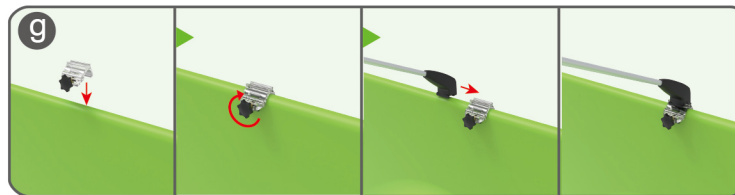
## STEP 04

Insert pole into base, screw clamp with hex wrench, place MDF board onto pole & insert into clamp with screw.



## STEP 05

Screw light clips at top of display stands, slide lights onto them and adjust their direction.



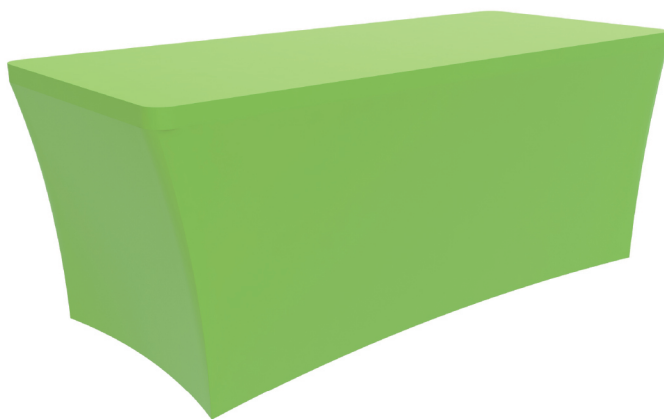
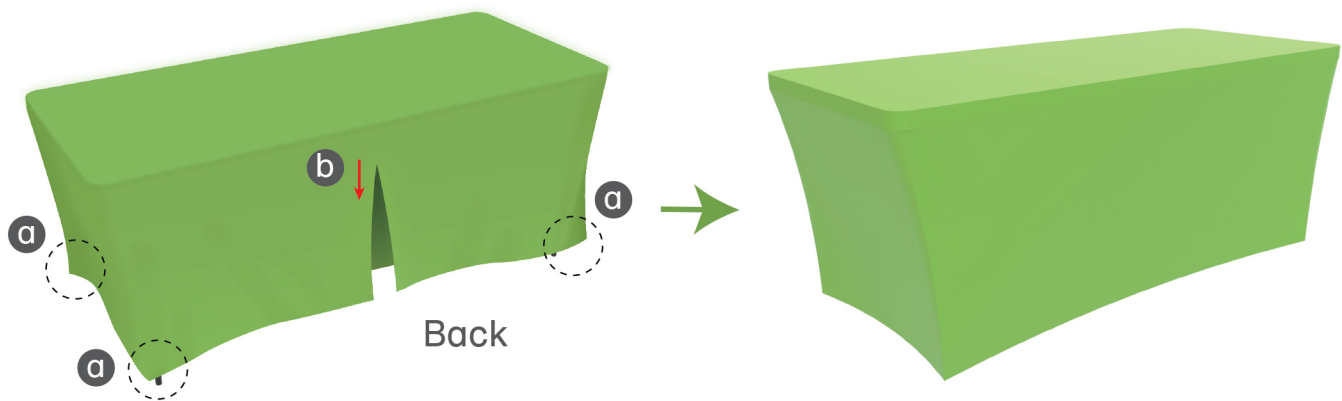
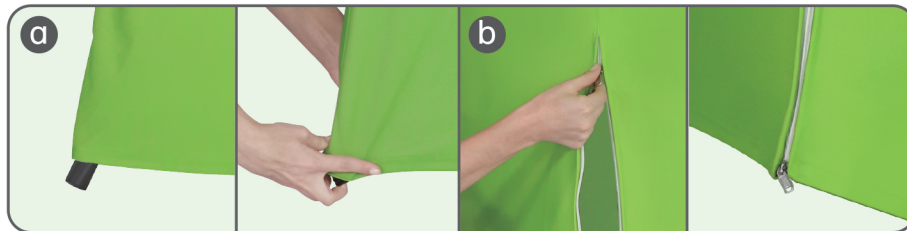
10X10FT-BOOTH-U

## STEPS

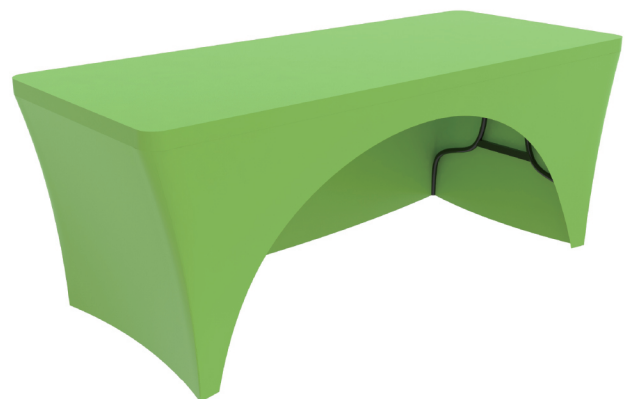
## Stretch Fit Table Cover

## STEP 01

Wrap table with stretch fit table cover from top to bottom, put its legs into pockets & zip up (if applicable).



TT-S-04/6/8S



TT-O-04/6/8S